



Performance +

performance of a traditional sheerweave screen
'plus' highly reflective properties of metallisation

3% and 5% openness factor | 2438mm

Sheerweave Performance + 2390 and 2410



Description: A 2 x 2 fibreglass screen with aluminum coating providing reduced solar heat gain, highly effective glare reduction, thermal performance and clear view to the outside. Intrinsically flame retardant with Greenguard and Microban certification.

Key Features:

- Width: 2438mm
- Suitable for: Roller, Roman & Panel Blinds
- Colourways: 7
- Quality: Screen

- Characteristics:**
- Bacteria and fungal resistant
 - Lead Free
 - Formaldehyde Free
 - Trackless technology (Refer to Definitions)
 - Cutting on Cross
 - Internal Use

Performance + 2390

Specifications:

- Composition: 34% Fibreglass, 64% vinyl on fibreglass with 2% aluminium coating
- Openness Factor: Approximately 5%
- UV Transmittance: 6-7
- Weave: 2 x 2 Basketweave
- Fire Classification: Tested to AS 1530 Part II & Part III, BS 5867 Part II, Type B NFPA 701 TM#1 Small Scale
- Colour Fastness (tms-tm-003): 4min
- Nominal Thickness: 0.46mm
- Nominal Weight: 379gsm
- Warp Tear Strength (ASTM D2261); Warp 5.909kgs, Fill 5.455kgs
- Cutting: Ultrasonic only
- Abrasion Test: (250 cycles metalized to face) Pass

Solar Optical Properties:

Colour	Solar Optical Properties						
	Ts	Rs	LT	Lr	%O	UVt	CRI
Oyster	8	71	8	70	5	7	99
Oyster/Beige	8	72	8	71	5	6	99
Beige	8	72	8	71	5	7	98
Charcoal	8	71	8	70	5	7	100
Charcoal/Grey	8	71	8	70	5	7	100
Charcoal/Chestnut	8	71	8	70	5	7	100
Charcoal/Gold	8	74	8	73	5	7	100

Manufactured: USA

Warranty: 5 years

Performance + 2410

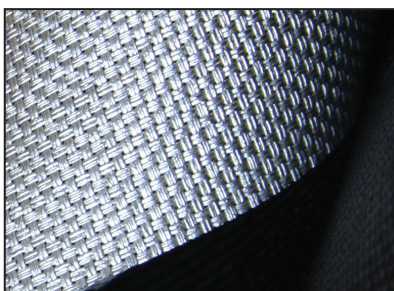
Specifications:

- Composition: 34% Fibreglass, 64% vinyl on fibreglass with 2% aluminium coating
- Openness Factor: Approximately 3%
- UV Transmittance: 3-4
- Weave: 2 x 2 Basketweave
- Fire Classification: Tested to AS 1530 Part II & Part III, BS 5867 Part II, Type B NFPA 701 TM#1 Small Scale
- Colour Fastness (tms-tm-003): 4min
- Nominal Thickness: 0.48mm
- Nominal Weight: 478gsm
- Warp Tear Strength (ASTM D2261); Warp 5.455kgs, Fill 7.727 kgs
- Cutting: Ultrasonic only
- Abrasion Test: (250 cycles metalized to face) Pass

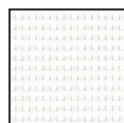
Solar Optical Properties:

Colour	Solar Optical Properties						
	Ts	Rs	LT	Lr	%O	UVt	CRI
Oyster	5	73	5	72	3	3	99
Oyster/Beige	5	73	5	72	3	4	99
Beige	5	73	5	72	3	4	98
Charcoal	4	71	4	70	3	4	100
Charcoal/Grey	4	72	4	71	3	4	100
Charcoal/Chestnut	4	72	4	71	3	4	100
Charcoal/Gold	4	75	4	74	3	4	99

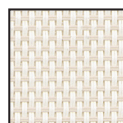
Colour Range *



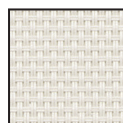
Sheerweave Performance + 2390 and 2410



oyster



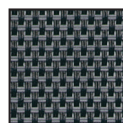
oyster/beige



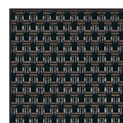
beige



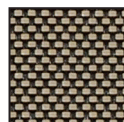
charcoal



charcoal/grey



charcoal/chestnut



charcoal/gold



Microban® antimicrobial protection inhibits the growth of damaging bacteria, mold and mildew on the fabric.

*colours representative only

Sheerweave Performance + 2390 and 2410



SOLAR HEAT CONTROL PROPERTIES					SHEERWEAVE 2390 PERFORMANCE+								
	High Performance Glass				Low-E Glass				6mm Double Clear Glass				
	Light Trans	g-Value/SHGC	SC	U-Value In W/m2K	Light Trans	g-Value/SHGC	SC	U-Value In W/m2K	Light Trans	g-Value/SHGC	SC	U-Value In W/m2K	
Glazing Performance	69	39	45	1.1	74	70	80	1.4	79	74	85	2.8	
Oyster	6	15	18	0.8	7	30	35	1.0	7	24	28	2.5	
Oyster / Beige	6	15	17	0.8	6	30	34	1.0	7	24	28	1.6	
Beige	6	15	18	0.8	6	30	35	1.0	7	25	29	1.6	
Charcoal	6	16	18	0.8	6	31	35	1.0	7	25	29	1.6	
Charcoal / Grey	6	16	18	0.8	6	30	35	1.0	7	25	29	1.6	
Charcoal / Chestnut	6	16	18	0.8	6	30	35	1.0	7	25	29	1.6	
Charcoal / Gold	6	15	17	0.8	6	24	28	1.0	7	24	28	1.6	
	6mm Single Bronze Glass				6mm Single Clear Glass				3mm Single Clear Glass				
	Light Trans	g-Value/SHGC	SC	U-Value In W/m2K	Light Trans	g-Value/SHGC	SC	U-Value In W/m2K	Light Trans	g-Value/SHGC	SC	U-Value In W/m2K	
Glazing Performance	49	58	67	5.7	88	84	96	5.7	90	87	100	5.8	
Oyster	4	20	23	2.5	8	22	26	2.5	8	22	26	2.5	
Oyster / Beige	4	19	22	2.4	7	22	25	2.4	7	22	25	2.5	
Beige	4	20	23	2.5	7	22	25	2.5	7	22	25	2.5	
Charcoal	4	20	23	2.5	7	23	26	2.5	7	23	26	2.5	
Charcoal / Grey	4	20	23	2.4	7	23	26	2.4	7	22	26	2.5	
Charcoal / Chestnut	4	20	23	2.5	7	23	26	2.5	8	23	26	2.5	
Charcoal / Gold	4	20	23	2.5	7	21	24	2.5	7	21	24	2.6	

SOLAR HEAT CONTROL PROPERTIES					SHEERWEAVE 2410 PERFORMANCE+								
	High Performance Glass				Low-E Glass				6mm Double Clear Glass				
	Light Trans	g-Value/SHGC	SC	U-Value In W/m2K	Light Trans	g-Value/SHGC	SC	U-Value In W/m2K	Light Trans	g-Value/SHGC	SC	U-Value In W/m2K	
Glazing Performance	69	39	45	1.1	74	70	80	1.4	79	74	85	2.8	
Oyster	3	15	17	0.8	4	29	33	1.0	4	24	27	1.6	
Oyster / Beige	4	15	17	0.8	4	29	34	1.0	5	24	26	1.6	
Beige	4	15	17	0.8	4	30	34	1.0	5	24	28	1.6	
Charcoal	3	15	18	0.8	3	30	34	1.0	4	25	28	1.6	
Charcoal / Grey	3	15	17	0.8	3	29	34	1.0	4	24	28	1.6	
Charcoal / Chestnut	3	15	17	0.8	3	30	34	1.0	4	24	28	1.6	
Charcoal / Gold	3	15	17	0.8	3	24	27	1.0	4	23	27	1.6	
	6mm Single Bronze Glass				6mm Single Clear Glass				3mm Single Clear Glass				
	Light Trans	g-Value/SHGC	SC	U-Value In W/m2K	Light Trans	g-Value/SHGC	SC	U-Value In W/m2K	Light Trans	g-Value/SHGC	SC	U-Value In W/m2K	
Glazing Performance	49	58	67	5.7	88	84	96	5.7	90	87	100	5.8	
Oyster	2	19	22	2.4	4	21	23	2.4	4	20	24	2.4	
Oyster / Beige	2	19	22	2.4	5	21	24	2.4	5	21	24	2.4	
Beige	2	19	22	2.5	5	21	24	2.5	5	21	24	2.5	
Charcoal	2	19	22	2.4	4	21	25	2.4	4	21	25	2.5	
Charcoal / Grey	2	19	22	2.4	4	21	24	2.4	4	21	24	2.4	
Charcoal / Chestnut	2	19	22	2.4	4	21	25	2.4	4	21	24	2.4	
Charcoal / Gold	2	19	22	2.4	4	21	25	2.4	4	21	24	2.4	

Definitions

Trackless Technology minimizes the fibreglass yarn's inherent tendency to track when being rolled up, so improving the performance of the finished blinds and reducing manufacturing time.

Solar Transmittance: The total solar energy that passes through the fabric.

Solar Reflection Out: Represents the percent of all wave lengths of electromagnetic energy that are reflected out.

Light Transmittance: Includes light that comes through the openings and light that is reflected inward off the yarn.

Light Reflection: Represents light that is returned to the outside by the fabric.

UV Transmittance: Percent of Ultra Violet light transmitted through the fabric.

Colour Rendering Index: A measurement of the fabrics effect on colour on a scale of 1 to 100 where 100 represents no colour distortion.

g-Value/SHGC: European equivalent for Solar Heat Gain Coefficient (SHGC). A rating that expresses the percentage of incident solar heat transmitted through a fenestration system. The solar heat gain coefficient is replacing the shading coefficient as the standard indicator of a window's shading ability. The lower the solar heat gain coefficient number, the less solar heat it transmits and the greater its shading ability.

SC (Shading Coefficient): Percentage of solar heat gain transmitted to the interior through the glass and shading system.

U-Value in W/m2K: Represents heat transmission in watts per square meter. This value does not represent US U-Values.

Care: The metalized coating is fragile and must be handled with care to avoid damage. Do no scrub. Do not use tape, solvents or abrasive cleaners which could damage the fabric coating. Clean with a damp soft cloth using a mild detergent. Rinse with clean water and allow blind to dry in the down position.